

PETERSON IN THE NETHERLANDS

Integrated logistics for the energy industry

“

As a family business, our absolute priority is keeping ourselves, our colleagues, our partners, and communities safe, making honest, responsible and respectful decisions.

”

Foreword

At Peterson, our expertise lies in optimising operations and driving sustainability and innovation in every project we undertake, from managing offshore wind farms to providing reliable logistics support for complex energy projects.

With a strong footprint in vital energy hubs like the North Sea, we are proud to play a key role in supporting renewable energy projects, whilst remaining committed to our oil and gas customers.

Our decades of experience allow us to take a proactive approach to the evolving energy landscape, ensuring that our services align with the industry's push toward sustainability and environmental stewardship.

We believe the success of our customers is our success, and our focus is to deliver the highest level of service quality and experience.

Sarah Moore
Chief Executive Officer



Peterson is a world-leading, innovative and highly trusted international energy logistics and supply chain solutions company, driven by a passion to lead the way in transforming how the industry plans, manages and executes the movement of critical resources globally.

Contents

Facilities & assets

- Facilities & assets overview [page 08](#)
- HUB Warehouse [page 09](#)
- Warehouse supply base & Warehouse airport [page 10](#)
- IJmuiden supply base [page 11](#)
- Storage of dangerous goods [page 12](#)
- Quayside office rental – Paleiskade 41 [page 13](#)
- Quayside office rental – Paleiskade 100 [page 14](#)
- Office rental – HUB [page 15](#)
- Base facilities [page 16](#)
- Equipment [page 17](#)

Port services

- Stevedoring [page 20](#)
- CCU [page 21](#)
- Portable tanks [page 22](#)
- Waste management [page 23](#)
- Chemicals & fuels [page 24](#)
- Dangerous goods consultancy [page 25](#)

Aviation services

- Aviation services [page 28](#)
- Helicopter chartering & flight management [page 29](#)
- Passenger check-in service [page 30](#)
- Airfreight management [page 31](#)

Agency services

- Port & shipping agency [page 34](#)
- Customs services (AEO certified) [page 35](#)
- Procurement services [page 36](#)
- Personnel services [page 37](#)

Marine & inspection services

- Marine surveys [page 40](#)
- Vessel chartering [page 41](#)
- SNS Pool [page 42](#)
- Industrial inspections [page 43](#)

HSEQ

- Our commitment to HSEQ [page 46](#)
- Driving towards a sustainable future [page 48](#)
- Carbon neutrality & net zero [page 49](#)

Case studies

- The SNS Pool [page 52](#)
- Logistics services for offshore converter platform [page 54](#)
- Offshore wind installation support [page 56](#)
- Onshore wind farm, Shetland Islands [page 57](#)



PETERSON

MDU-0034

MDK-503

MDL-015

JA287

691032

oeg

CG 1046

M

ABAS

DECU

33663

01

Facilities & assets

Facilities & assets overview

Peterson operates an extensive network of facilities across the Netherlands, supporting offshore logistics operations from strategic locations at the Ports of Den Helder and IJmuiden.

Our main HUB warehouse offers 14,000m² of yard space, customs-bonded and conditioned storage, and secure 24/7 operations with AEO certification.

Complementing this, our supply base and airport warehouses provide flexible, PGS-compliant storage for general cargo and aviation logistics, ensuring seamless transitions offshore.

From our quayside in Den Helder, we offer fully integrated logistics solutions. Supported by modern office spaces and a dedicated fleet of heavy-lift and electric vehicles, our facilities ensure efficient, secure, and sustainable offshore logistics operations.

Our IJmuiden supply base expands our reach in the Southern North Sea, featuring three warehouses, stevedoring capabilities, and full port agency services.



The Netherlands

HUB Warehouse

At our strategic storage HUB facility located 2.5km away from the quayside, we offer customs bonded storage as well as conditioned warehousing for smaller goods where required.

Total yard space is 14,000m² and the warehouse can store 700+ pallets. For dry packing of cargo into containers, a 500m² roofed area is available.

Operating from the HUB gives exclusive rights to our fleet of CCUs, and we have a team of planners available for each client to meet your requirements. The HUB locations are customs storage areas where we hold Authorised Economic Operator (AEO) certification, allowing the storage of bonded customs materials. This means we can provide storage without VAT and import duty payment on location.

24-hour security is provided at the Peterson HUB by a specialist security contractor. In addition to having controlled access at the main entrance of each site, we have CCTV cameras strategically placed throughout our sites. Security personnel also carry out roaming patrols at various times during the night. These initiatives serve to ensure the security of both internal and external facilities. The entire area is fenced including the waterfront to the industrial harbour.



Warehouse supply base & Warehouse airport

We operate two dedicated warehouse facilities that support the offshore supply chain with secure, flexible and well-equipped storage capacity, one at our main logistics supply base and one located directly at the airport.

Our warehouse at the supply base offers 475m² spacious storage for general cargo, and a 95m² pallet zone which can store up to 120 pallets for project materials and palletised goods. It is ideally suited for supporting supply base activities, with ample floor space and high pallet capacity.

The aviation warehouse offers 150m² secure storage located landside, and is focused on the needs of offshore travellers and aviation logistics. It includes secure storage for survival suits and lifejackets, charging stations for radios and electronic devices, as well as luggage storage for offshore crews between rotations.

Together, these facilities form an integrated part of our logistics infrastructure, ensuring smooth transitions from warehouse to quayside or helicopter deck.



600m²
storage
capacity



120
pallet storage
zone



Strategic
access
points



IJmuiden supply base

Our newest supply base in IJmuiden offers a strategic location which expands our services to customers in the Southern North Sea. This includes supporting work at operations and maintenance bases for offshore wind customers in the area.

From IJmuiden, we operate three warehouses – two of which are located directly at the quayside enabling customers to store goods and equipment in immediate proximity to offshore operations.

The third warehouse, known as the shore base, offers a large yard and indoor storage close to the quayside and is ideally suited for large equipment, mobilisations, and long-term storage.

Our comprehensive service offering from IJmuiden includes port agency and ship agency services, customs clearance, and stevedoring with its own equipment, as well as storage and handling services, vessel chartering, CTV campaign support, and related logistics solutions.



Storage of dangerous goods

At Den Helder quayside, we offer both bulk storage and specialised chemical warehousing. This integrated setup minimises transportation costs and supports a highly efficient logistics service. Our facilities are fully compliant with PGS regulations, allowing for the safe storage of hazardous materials close to the point of offshore loading. This proximity eliminates the need for additional transport movements, resulting in both time and cost savings.

Our HUB facility also has an environmental permit including a PGS 15 storage area, and our aviation warehouse includes a compliant zone for temporary Dangerous Goods (DG) storage.

Benefits include:

- **Scalable 24/7 operations:** round-the-clock, PGS-compliant warehouse and yard services
- **Certified equipment & skilled crew:** extensive fleet of certified CCUs and experienced teams for efficient (un)packing
- **Strategic quayside location:** onsite storage minimises transport needs and enables integrated loading
- **Operational efficiency:** close coordination with vessel schedules enhances turnaround
- **Offshore campaign support:** immediate stock availability ensures agile response



Quayside office rental - Paleiskade 41

For long-term clients or those looking for a more independent setup, we offer dedicated office space on the first floor of the “Blauwe Paleis” building, directly overlooking the quay and stevedoring operations.

This area, approximately 475m², can be fully separated from the rest of the facility and offers a unique opportunity to establish a base of operations within walking distance of ongoing logistics activities.

The location, proximity to vessel handling, and direct access to our teams and infrastructure make this a practical and strategic choice for offshore service providers and logistics partners alike.



Quayside office rental - Paleiskade 100

At Paleiskade 100 in Den Helder, Peterson offers 150m² of modern, ready-to-use office space for offshore coordination teams. Located directly at the quayside and next to our logistics operations, this space is ideal for campaign HUBs, marine coordination, or temporary project offices.

The offices have recently been renovated and are immediately available. Clients benefit from proximity to vessel loading, warehousing and operational teams, enabling efficient communication and execution.

Benefits include:

- **150m² renovated office at quayside:** direct access to logistics and base operations
- **Strategic & convenient:** walking distance to vessel berths and warehousing
- **Flexible & secure:** ideal for short- or long-term use by campaign and coordination teams, with flexible terms and secure facilities



Office rental – HUB

At our HUB location, we offer flexible office space for clients looking to be close to the start of the supply chain. While this location does not overlook quay operations, it is situated directly at the yard, where subcontractors, vendors, packing and unpacking activities take place.

This makes it an ideal base for offshore logistics teams, service providers and vendors who want to stay close to the action. All offices are equipped with a data connection and offer direct access to the yard, adjacent warehouses and shared facilities.

Multiple office units are available in various sizes, ranging from 4m² to 300m², and can be rented flexibly to suit both short-term project needs and long-term operations.

Service highlights:

- **Prime supply chain location:** positioned at the start of the offshore supply chain, close to subcontractors, vendors and cargo preparation areas
- **Seamless facility access:** direct access to yard and warehouse operations
- **Flexible office space:** units from 4m² to 300m², all with flexible terms and data connectivity



Base facilities

We manage and plan our own quayside operations. The quay is fully ISPS compliant with Port security on site and includes a heavy lift pad for lifts up to 100 metric tonnes. The quayside has its own potable (chlorinated) water system with loading speeds up to 60CBM per hour.

Benefits include:

- **Guaranteed berth access:**
100% berth availability with 24/7 stevedoring support
- **Flexible quayside storage:**
short-term storage and sufficient space for transit cargo
- **Specialised cargo handling:**
48-hour storage for Class 1 & 7 goods with full cargo inspection available, including IMDG compliance
- **Onsite inspection services:**
immediate response to ad hoc inspection requests via in-house experts



Equipment

We operate our own fleet of heavy equipment to ensure full flexibility and independence during stevedoring and logistical operations. This gives us the ability to act fast, work safely, and take on a wide variety of lifting and transport tasks, without relying on external rental providers.

Our fleet includes mobile cranes (130T & 150T), fully modified and outfitted for offshore operations. These cranes are deployed across various locations and projects, supporting everything from container lifts to complex rigging operations. Combined with a range of certified lifting accessories such as spreader bars, we're able to execute almost all lifts in-house.

We also operate a fleet of various forklifts, 80% of which are electric. The remaining 20% run entirely on HVO100, supporting our broader sustainability goals. The forklift range includes various models up to 16 metric tonnes capacity, ideal for handling heavier loads safely and efficiently.

To support on-site logistics, we maintain a pool of truck and flatbed combinations, including extendable trailers. These units are fully HVO100-powered and are used to move cargo between quay, warehouse and client sites as needed, ensuring timely delivery and minimal delays.



Service highlights:

- **In-house heavy lifting:** offshore-ready mobile cranes (130T & 150T) and forklifts up to 16T
- **Full rigging setup:** including certified spreader bars and lifting accessories
- **Sustainable transport fleet:** HVO100-powered trucks and electric forklifts



1580KG
840KG
11000KG

1744

HELDER

7 08052566 U

02

Port services

Stevedoring

Our stevedoring operations are carried out from our own **private quaysides** as well as the public quaysides, giving us full control over safety, planning and execution. We operate with in-house crews working in three shifts, **24 hours** a day when required, allowing us to respond quickly and efficiently to any offshore or industrial cargo handling needs.

Our workforce includes experienced foremen, team coordinators, riggers, crane operators, forklift drivers and certified banksmen. This ensures we always have the right disciplines in place for the job, whether it involves loading, unloading, lashing, or securing specialist cargo.

We work with our own fleet of equipment, including forklifts in all relevant sizes, mobile cranes and trucks. This not only gives us operational flexibility but also allows us to maintain a high standard of safety and efficiency on every job.



Service highlights:

- **Fully controlled quay operations:** crews available 24/7
- **Multidisciplinary in-house teams:** including riggers, crane operators, banksmen, and coordinators
- **Dedicated equipment fleet:** full range of owned forklifts, mobile cranes, and trucks ensures safe, efficient offshore and heavy cargo handling

CCU

From our HUB, we manage a fleet of over 1,000 fully certified offshore containers, supplied through trusted partners OEG Offshore and Swire Energy Services. The fleet includes all standard CCU types, ranging from two to 54 feet, as well as a wide selection of special dimensions to accommodate non-standard cargo.

As the HUB serves as the official depot location, customers can on- and off-hire containers on-site, without paying outbound or inbound handling fees, offering a clear advantage over traditional rental setups.

All containers are inspected on-site and meet DNV 2.7-1 standards. We maintain continuous availability to ensure you always have access to the right equipment, no matter the project scope or cargo type.



1000+
containers



Up to
54ft



No onhire
and offhire
fees



Portable tanks

We offer a large and diverse fleet of portable tanks, purpose-built for the safe transport of a wide range of production chemicals and (bio)fuels. Owned and operated by Peterson, all tanks meet the highest industry standards in terms of safety, compliance, and ease of use. Combined with our on-site warehousing, chemical and fuel handling, and tank cleaning services at the quayside, we provide a fully integrated logistics solution, covering procurement, storage, handling, and transport from a single source.

Benefits include:

- **Comprehensive tank services:** Peterson-owned fleet of portable tanks for chemicals, (bio)fuels, and bulk waste
- **One-stop logistics:** integrated sourcing, storage, transfer, and transport solutions
- **Onsite tank cleaning:** reduces turnaround time and transport costs
- **Safety & compliance:** meets top-tier operational and safety standards



Waste management

We manage the handling, storage, and transport of waste materials in strict compliance with Dutch environmental legislation. Leveraging deep expertise and trained personnel, Peterson acts as an intermediary to coordinate the entire waste logistics process on behalf of the waste producer. Given the complexity and strictness of applicable regulations, our service ensures full legal compliance while relieving the client of operational burdens. For small-packaged hazardous waste, we offer dedicated PGS 15-compliant storage facilities at our site.

Benefits include:

- **Regulatory compliance & coordination:** full adherence to Dutch environmental and waste regulations
- **End-to-end waste services:** we act as an intermediary for logistics, coordinating temporary storage, transport, documentation, and compliance administration
- **Certified hazardous storage:** PGS 15-compliant facilities for small packaged waste
- **Transparent reporting:** complete waste register ensures traceability and accountability



Chemicals & fuels

From our Den Helder quayside, we supply and deliver a wide range of production chemicals including glycols and (bio)fuels such as (Bio)Diesel and Aviation Fuel Jet A-1. Our team of dangerous goods specialists, in combination with our certified portable tanks, ensures the safe and compliant transport of almost any substance. Whether you require small packaged volumes or bulk deliveries, we provide a flexible and reliable service.

On site, we operate an advanced pumping installation with specialised equipment, allowing us to transfer almost all common chemicals and fuels from drums, IBCs or tank trucks directly into portable tanks. Combined with our warehousing facilities, portable offshore tank rental, waste management services and tank cleaning station, we offer a fully integrated and seamless logistics solution.

Benefits include:

- **Chemical & fuel supply:** safe quayside delivery of packaged or bulk (bio)fuels and chemicals
- **Advanced transfer systems:** certified tanks (1,000–20,000L) and pumping from drums, IBCs, or tank trucks
- **Integrated & compliant:** linked with warehousing and tank cleaning, fully ADR/IMDG compliant
- **One-stop solution:** streamlines operations while ensuring safety and regulatory adherence



Dangerous goods consultancy

Our certified Dangerous Goods Safety Advisors (DGSA) and trained personnel offer expert guidance on a wide range of regulations, including IMDG (sea transport), ADR (road transport), IATA (air transport), PGS (hazardous goods storage), and waste legislation. With extensive experience and sector-specific knowledge, we support clients in managing complex challenges related to the safe transport and storage of dangerous substances.

Our consultancy services cover topics such as compliance, safety management, and logistics process optimisation, ensuring that our customers' operations are both legally compliant and future-proof.

We also provide high-quality printing of delivery marks and placards in full compliance with IMDG, ADR, and other transport legislation.

Benefits include:

- **Certified DG Safety Advisors:** multi-modal experts in IMDG, ADR, PGS 15, and waste legislation
- **Comprehensive hazard support:** guidance on safe handling, transport, storage, and documentation
- **Compliance & risk management:** risk-based assessments, process improvements, and future-focused regulatory advice





G-SVC

CHC

NO HAND HOLD

03

Aviation services

Aviation services

At Den Helder Airport, Peterson offers a comprehensive solution tailored to meet all aviation related needs. Strategically located with our own office situated directly at the airport and a dedicated check-in desk, we are uniquely positioned to provide seamless and efficient services to both our clients and their offshore workers.

Our team specialises in supporting offshore operations, ensuring that all passengers, primarily offshore personnel, experience a smooth and professional travel process. From check-in to freight handling, we manage every aspect with precision and a strong focus on service and safety.

We pride ourselves on our ability to offer flexible, client-specific solutions. Whether it's chartering flights, coordinating flights, handling crew changes, managing freight logistics, or ensuring rapid turnaround times, our local presence allows us to respond quickly to operational needs and changes.

Through close collaboration with airport authorities, helicopter operators, and offshore companies, Peterson ensures that all movements are efficiently coordinated, doing all that we can to minimise delays and maximise uptime for offshore operations. Over the past 10 years, Peterson has saved over 7000 hours of flight time, more than 3.2m litres of fuel, and 8m kg of CO₂ by initiating and setting up shared flights for offshore companies.

By combining deep knowledge of the energy sector with decades of logistical expertise, Peterson delivers reliable, high-quality services that support the vital link between onshore and offshore.



Helicopter chartering & flight management

We provide full management of the helicopter chartering process on behalf of our clients, delivering a turnkey solution that covers every aspect, from the initial contracting with certified helicopter operators to ongoing operational supervision. This includes the procurement of dedicated flight minutes, ensuring optimal availability and flexibility to meet project-specific demands.

Our team oversees the full planning and coordination of both dedicated and shared helicopter flights, with all movements meticulously scheduled and recorded in the Vantage POB (Personnel On Board) system. This ensures real-time visibility, compliance with offshore personnel tracking requirements, and seamless integration with client operations.

Beyond flight logistics, we take complete responsibility for the coordination of crew changes, managing all related communications and callouts to vendors on the client's behalf. Our services extend to comprehensive husbandry support, including reliable taxi transfers, hotel reservations, and other travel arrangements, ensuring personnel are well-supported from departure to arrival.

Through our helicopter chartering and crew change management services, we deliver efficiency and accountability, allowing clients to focus on their core operations while we handle the critical logistics.



Service highlights:

- **End-to-end helicopter coordination:** on-site planners manage charters and procurement of certified operators and project-specific flight minutes
- **Integrated personnel tracking:** seamless Vantage POB integration for real-time crew visibility
- **Full-service crew logistics:** coordination of crew changes, vendor callouts, transport, and accommodation
- **Single point of contact:** ensures operational clarity and reduces client workload

Passenger check-in service

We offer end-to-end management of the offshore passenger check-in process, meticulously designed to ensure the highest standards of safety, regulatory compliance, and operational efficiency. Our services cover all critical aspects of pre-flight preparation, including thorough document verification, certification checks (such as medicals, training records, and offshore safety passports), passenger system registration, and the execution of XBR (body composition) measurements, as required under mandatory offshore aviation regulations.

To facilitate a streamlined experience, we operate our own dedicated check-in desk at Den Helder Airport. Our team of trained professionals ensure that all offshore personnel are processed efficiently and in compliance with relevant safety protocols. In addition to check-in services, we provide high-quality, regularly inspected personal protective equipment (PPE), including survival suits and lifejackets, ensuring that all passengers are fully equipped and ready for safe helicopter transport to offshore installations.

Our goal is to deliver a seamless and stress-free check-in experience that upholds the safety and readiness of every offshore worker from the airport to their destination.



Service highlights:

- **Complete check-in management:** includes XBR measurements, medical and certification verification
- **Onsite airport desk:** staffed at Den Helder Airport with offshore safety-trained personnel
- **Certified PPE provision:** survival suits, lifejackets, and accessories supplied
- **Efficient & compliant processing:** ensures safe and stress-free offshore departures

Airfreight management

We provide comprehensive airfreight coordination services specifically tailored to the unique demands of offshore and remote logistics operations. Our full support includes freight bookings, complete management of customs clearance, preparation and handling of all shipment documentation, and seamless coordination of freight forwarding to designated vendors or project sites.

Recognising the critical nature of offshore operations, we offer specialised handling for time sensitive and high risk cargo, including dangerous goods. These shipments are managed by certified personnel trained in accordance with IATA 7.3 Dangerous Goods Regulations, ensuring compliance and safety throughout the logistics supply chain.

To further support offshore crews and rotational staff, we also provide secure luggage storage facilities conveniently located at the airport. This service enhances mobility and simplifies travel logistics, enabling personnel to transition smoothly between assignments without the burden of excess baggage.

Our airfreight solutions are designed to deliver reliability, speed, and safe transportation of goods no matter how remote the destination is.



Customs clearance



IATA 7.3 certified



Reliable delivery





04

Agency services

Port & shipping agency

Peterson provides full-scope agency services to ensure smooth and compliant port calls from start to finish. We coordinate all formalities and logistics, from pre-arrival clearance with port authorities to full operational support while the vessel is alongside.

What sets us apart is our 24/7 availability, seamless integration with base operations, and in-house customs expertise. With short lines of communication, dedicated equipment on site, and a bonded warehouse backed by our AEO-certified customs department, we offer reliable and efficient services tailored to the specific demands of offshore logistics.

Unlike many general agents, we operate directly from our own quayside with equipment and personnel on site. This gives clients a measurable edge in cost control, operational speed, and flexibility. By eliminating unnecessary transport steps and delays, we help reduce overall turnaround time and avoid hidden costs.

Each port call is carefully managed, starting well before the vessel arrives. We handle all required notifications and formalities, including customs, immigration, and ISPS compliance. Berth arrangements and pilotage, including exemption requests where applicable, are coordinated in advance. Prior to arrival, we schedule a call with the vessel to align expectations and ensure smooth entry.

During the port stay, we support all critical services. This includes crew changes, bunkering, bonded storage, and local procurement. We also manage waste handling, customs documentation, and coordinate any third-party services needed to keep operations moving safely and efficiently.



Service highlights:

- **Centralised port call management:** single point of contact with 24/7 operational support
- **Seamless integration:** aligned with base operations, on-site equipment, and bonded warehousing
- **Offshore-focused efficiency:** direct quayside access minimises handling time and costs, backed by proven industry expertise

Customs services (AEO certified)

Our in-house customs team holds AEO certification (Authorised Economic Operator), a formal recognition by Dutch Customs that confirms our reliability, security and compliance. This status enables faster processing, fewer checks and priority treatment, offering a clear advantage in time-sensitive offshore logistics. We manage the complete customs process, including import, export, bonded storage, temporary imports and transit documentation. Clients benefit from a streamlined, fully compliant process with minimal administrative burden.

Benefits include:

- **Trusted AEO-certified partner:** recognised by Dutch Customs with 24/7 availability
- **Streamlined clearance:** offshore-specific expertise enables faster procedures and fewer inspections
- **Comprehensive support:** handling of bonded goods, VAT exemptions, and transit documentation with full compliance assurance



Procurement services

Our procurement team sources strategically, responding directly to the real-time needs of projects. With deep knowledge of both local and international markets, we help clients make well-informed decisions that balance quality, lead time and cost.

Our technical buyers have many years of experience within the offshore industry. They understand the practical demands and dynamics of offshore projects, allowing them to anticipate needs and act accordingly. This industry insight ensures sourcing decisions that truly align with project requirements.

From sourcing and supplier coordination to invoice handling, we provide a seamless and efficient procurement solution from order to settlement. Our proactive approach, transparency and market knowledge make us a trusted partner in complex offshore operations.



Service highlights:

- **Strategic sourcing for energy projects:** need-based procurement optimised for quality, cost, and lead time
- **Full procurement support:** includes invoice handling, supplier coordination, and technical expertise
- **Transparent & agile:** clear reporting and responsive communication for dynamic offshore environments

Personnel services

Peterson recruits and supplies certified offshore personnel for energy operations. With in-depth industry experience, we understand the critical skills, qualifications and mindset required for offshore roles.

We offer flexible staffing for short-term rotations or full campaigns. Whether you need deck crew, technicians, supervisors or OIMs, we deliver professionals who are screened, qualified and ready to perform.

Benefits include:

- **Certified offshore staffing:** recruitment and placement aligned with industry compliance standards
- **Experienced talent pool:** wide access to qualified professionals for flexible project demands
- **End-to-end support:** covers onboarding, certification, and mobilisation for short- or long-term needs





BOS BASE

4-21768

4-21768

4-21768

4-21768

4-21768

4-21768

4-21768

05

Marine & inspection services

Marine surveys

We support offshore operations with a full suite of vessel and marine assurance services, delivered in line with international standards such as OCIMF (OVID), IMCA (CMID), IMO and MSF. Whether through standard compliance checks or tailored client-specific programs, we help operators, vessel owners and charterers maintain safety and control over their marine assets.

Our scope includes vessel and company audits, DP assurance, incident investigation and operational assessments, executed by experienced mariners and independent marine consultants.

Benefits include:

- **Compliance & auditing:** aligned with ISM, ISPS, ISO 9001, OVID, and CMID standards
- **Tailored inspection & DP services:** includes FMEA, annual trials, reviews, and operational checks (BTMA, SMAT, TCI)
- **Specialised marine support:** expert assistance for rig moves, towage, FPSO operations, and heavy lifts



Vessel chartering

Peterson facilitates the chartering of offshore support vessels such as Crew Transfer Vessels (CTVs), Platform Supply Vessels (PSVs), Multi-Role Vessels (MRVs), Emergency Response Vessels (ERVs), and Emergency Response and Rescue Vessels (ERRVs), based on operational requirements.

We coordinate the entire process from enquiry to final contracting, in close cooperation with vessel owners. Whether the request involves a short-term operation or a long-term deployment, we ensure alignment with technical requirements, planning and compliance. Peterson acts as a single point of contact to safeguard quality, continuity and transparency throughout the chartering process.

Benefits include:

- **Vessel chartering:** coordination of CTVs, PSVs, MRVs, ERVs, ERRVs, and more, from request to contract
- **Flexible & integrated solutions:** suitable for short or long-term use, and integrated with base logistics and personnel services
- **Trusted partnerships & clear oversight:** compliance focused operations, and transparent communication
- **Leading the way:** Peterson is the largest non-operator vessel charterer in Europe



SNS Pool

The Southern North Sea Pool (SNS Pool) is an integrated fourth party logistics concept (4PL), where (currently) 10 offshore energy operators outsource their combined marine requirements to Peterson as a facilitator. The development of this unique and innovative concept was initiated in 1993 and started with various smaller scale vessel and supply base sharing arrangements which evolved in 2002 with the establishment of the SNS Pool for marine.

With the energy transition underway, the SNS Pool facilitates industry collaboration and sharing of assets to deliver greater efficiencies, lower emissions, and drive innovation across operations. A shared pool of Platform Supply Vessels (PSV's), shared cargo runs, and a shared supply base in Den Helder form the basis of the SNS pool which offers operators unrivalled cost savings and flexibility in regard to their offshore logistics.

The SNS Pool has centralised its combined marine and supply base operations in Den Helder, with shared cargo runs always sailing via Den Helder. For sole use cargo runs and/or dedicated PSVs, operators have the option to visit other ports including those in the UK utilising SNS pool vessels.

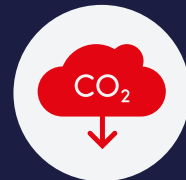
In addition to port and vessel services, Peterson, as facilitator of the SNS Pool, is also responsible for the chartering and management of supply vessels, the allocation of round trips for all vessels, and the planning of routes for each cargo run. To manage this complex planning process, bespoke SNS Pool software is utilised, which also calculates and allocates each partner's share of all operational costs involved, accounting for variable factors, such as actual used capacity and handling time per offshore installation.



150
offshore locations
served



Up to
36%
cost savings



27m kg
of CO₂ reduced
annually



Industrial inspections

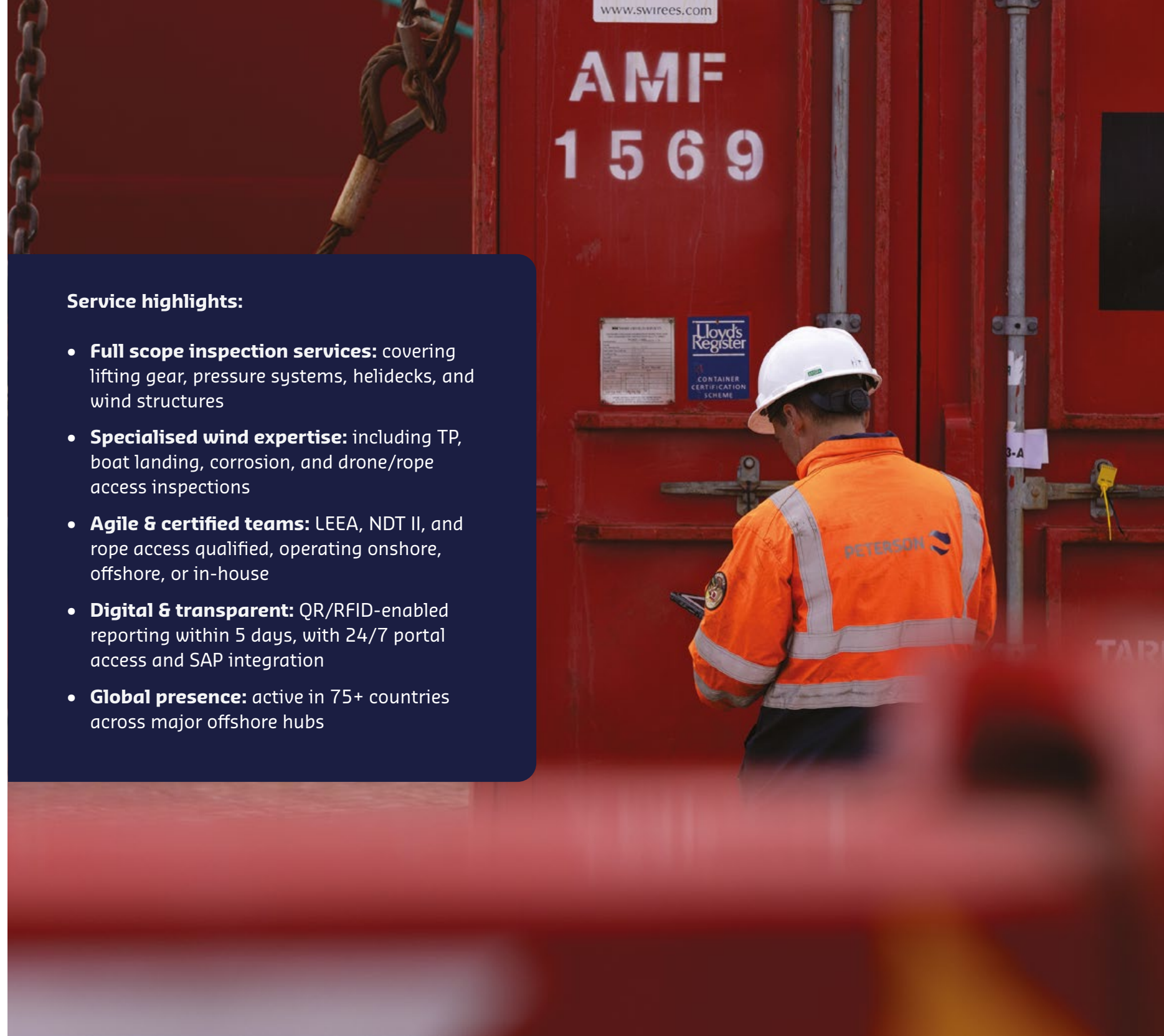
We provide independent technical inspection services to ensure asset integrity, safety and compliance in offshore and industrial environments. Our scope ranges from routine inspections to wind-specific and specialist surveys, delivered on-site, offshore or at our own certified test facilities.

All inspections are performed by certified, multi-skilled personnel in line with international standards such as ISO, LEEA, ASNT and ILO 152. We support a wide variety of clients, including platform operators, wind farm contractors and OEMs, with both general and project-specific inspections across lifting equipment, pressure systems, helidecks, containers, drilling gear and wind infrastructure.

Through our secure digital portal, clients have 24/7 access to certificates, reports and asset data. Whether it concerns a one-off job or a long-term inspection program, we deliver consistent quality, short turnaround times and clear reporting.

Service highlights:

- **Full scope inspection services:** covering lifting gear, pressure systems, helidecks, and wind structures
- **Specialised wind expertise:** including TP, boat landing, corrosion, and drone/rope access inspections
- **Agile & certified teams:** LEEA, NDT II, and rope access qualified, operating onshore, offshore, or in-house
- **Digital & transparent:** QR/Rfid-enabled reporting within 5 days, with 24/7 portal access and SAP integration
- **Global presence:** active in 75+ countries across major offshore hubs





PETERSON

Lloyd's Register
CONTAINER
CERTIFICATION
SCHEME

DAMMERK
BERGE

06

HSEQ

Our commitment to HSEQ: a foundation of trust & sustainability

At the heart of our operations lies a steadfast commitment to Health, Safety, Environment, and Quality (HSEQ). Our dedicated HSEQ department and robust HSEQ management system aren't just about compliance; they're about fostering a culture where every individual feels safe, valued, and empowered.

We're proud to be certified to the highest international standards, including ISO 9001 (Quality Management), ISO 45001 (Occupational Health and Safety Management), ISO 14001 (Environmental Management), ISO 50001 (Energy Management), and ISO 14068-1 (Carbon Neutrality Management).

What sets our HSEQ apart: a track record of excellence



Highly qualified HSEQ professionals



Robust HSEQ management system



Comprehensive operational safety training



HSEQ consultancy services



Hands-on safety approach



Exceptional safety statistics



Highly qualified HSEQ professionals

Our HSEQ department is staffed by a team of highly educated and experienced professionals. This includes safety experts, an environmental specialist, and a dedicated quality specialist, ensuring comprehensive expertise across all HSEQ domains.



Robust HSEQ management system

Our comprehensive HSEQ management system features robust procedures that are highly adaptable, designed to ensure efficiency, excellence, safety and compliance in a variety of industries.



Comprehensive operational safety training

We place a strong emphasis on continuous learning and competency for operational personnel. We have developed rigorous assessments for forklift, crane and truck drivers, and specialised training for our foremen and yard coordinators. This ensures our team not only meets but exceeds industry safety standards.



HSEQ consultancy services

Beyond our internal operations, our highly experienced HSEQ team can also provide expert consultancy services to help other organisations enhance their safety, environmental, and quality performance.



Hands-on safety approach

We believe that safety is built on a foundation of trust and close collaboration with our workforce. Our approach is hands-on, ensuring that safety protocols are deeply embedded in daily operations through continuous engagement, comprehensive briefings, and practical safety training.



Exceptional safety statistics

We boast an outstanding safety record, with zero recordable incidents in the Netherlands between 2020 and 2024. This achievement is testament to our robust safety culture and the commitment of our operational and safety teams.

Driving towards a sustainable future

Sustainability isn't just a buzzword for us; it's a core principle guiding our strategic decisions and daily actions. We're making significant strides in reducing our environmental footprint and contributing to a greener future.

Our key initiatives include:

- **Electric forklifts:** We're systematically transitioning our fleet to electric forklifts across all facilities, significantly reducing emissions and noise pollution.
- **Green energy:** We're committed to supporting renewable energy initiatives, operating on 100% green electricity and 100% CO₂ compensated gas.
- **Sustainable fuels for heavy equipment:** We're actively exploring and implementing Hydrotreated Vegetable Oil (HVO) as a sustainable fuel source for our cranes and trucks, significantly reducing greenhouse gas emissions and improving air quality.
- **Pioneering net zero initiatives:** We're not just reducing our footprint; we're actively pursuing net zero ambitions for our locations. A prime example is our HUB location, where we're making significant progress towards net zero with innovative solutions including a new heating system using ceiling panels. Furthermore, all forklifts at our HUB are now electric, drastically reducing on-site emissions and noise.
- **Innovative technology solutions:** Our Lighthouse suite of digital applications digitalises the end-to-end logistics supply chain, achieving optimal planning by minimising the movement of goods across locations.



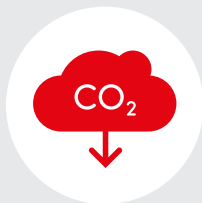
Carbon neutrality & net zero

Carbon neutral status was first achieved by Peterson in 2022, when we became one of the first energy logistics companies to offer a carbon neutral service on an international scale under the PAS2060 certification. We also became the first company to achieve the new ISO 14068 standard from NQA in April 2025.

This demonstrates our continued focus on achieving robust environmental standards and advancing our sustainable practices. ISO 14068 provides a rigorous, transparent framework for measuring, reducing, and offsetting carbon emissions and allows us to provide fully verified carbon neutral operations to our clients, driving mutual progress towards net zero.



23
sites



05
countries



42%
emission reduction



CARBON NEUTRAL

AT PETERSON



07

Case studies

The SNS Pool

In the offshore energy sector, collaboration is key to boosting efficiency, safety, and sustainability. The Southern North Sea (SNS) Pool shows the power of shared logistics. As its facilitator and manager, Peterson drives smarter operations and measurable carbon and cost savings.

CHALLENGE

Need for a solution to maximise vessel utilisation amongst energy operators.

SOLUTION

Peterson facilitates and manages the SNS Pool for more efficient and sustainable cargo runs and onshore services in the Netherlands.

RESULTS

The SNS Pool has serviced 150 offshore locations, with up to 36% cost savings and 27 million kg of CO₂ reduced annually.

THE SNS POOL: A SHARED MARINE AND SUPPLY BASE SOLUTION

The SNS Pool consolidates platform supply vessel (PSV) activities across operators into a single, optimised schedule, reducing duplication and maximising vessel utilisation. It currently operates a fleet of 11 PSVs, flexibly deployed based on shared demand.

The SNS Pool began serving oil and gas operators but has successfully expanded to renewables, supporting offshore wind farms and other clean energy projects – illustrating the model's adaptability to the evolving energy landscape including Hollandse Kust Zuid and Hollandse Kust Noord in the Netherlands, as well as the Sofia Wind Farm on Doggerbank – the first UK project to utilise shared cargo runs from the Netherlands.

In Spring 2025, the SNS Pool operated:

- **259** voyages
- **3,415m³** of USLD fuel consumed
- **50,570** tons of cargo transported
- **62,000** nautical miles covered
- **16,143** lifts performed

Beyond vessels, Peterson offers a comprehensive suite of shared onshore services, including warehousing, cargo handling, helicopter operations,

and equipment maintenance. This integrated approach creates additional efficiencies and cost benefits across the logistics supply chain.

MANAGING UNCERTAINTY THROUGH SMARTER SCHEDULING

While logistics face unpredictable factors like weather and last-minute cargo changes, the Pool's scheduling framework proactively incorporates these uncertainties. This has improved reliability and lowered costs.

A 2022 business case comparing different scheduling scenarios showed that this approach leads to:

- **50% lower logistics costs** under realistic operating conditions
- **Up to 60% less spot vessel use**, reducing reactive spend and emissions
- **Stronger schedule robustness**, improving reliability in real-world scenarios

SCALING COLLABORATION: A REPLICABLE MODEL

The SNS Pool's success extends beyond the Southern North Sea. Similar shared logistics models operate with six to 10 vessels in Aberdeen and up to 18 vessels in the Ymond Pool. Together, these examples

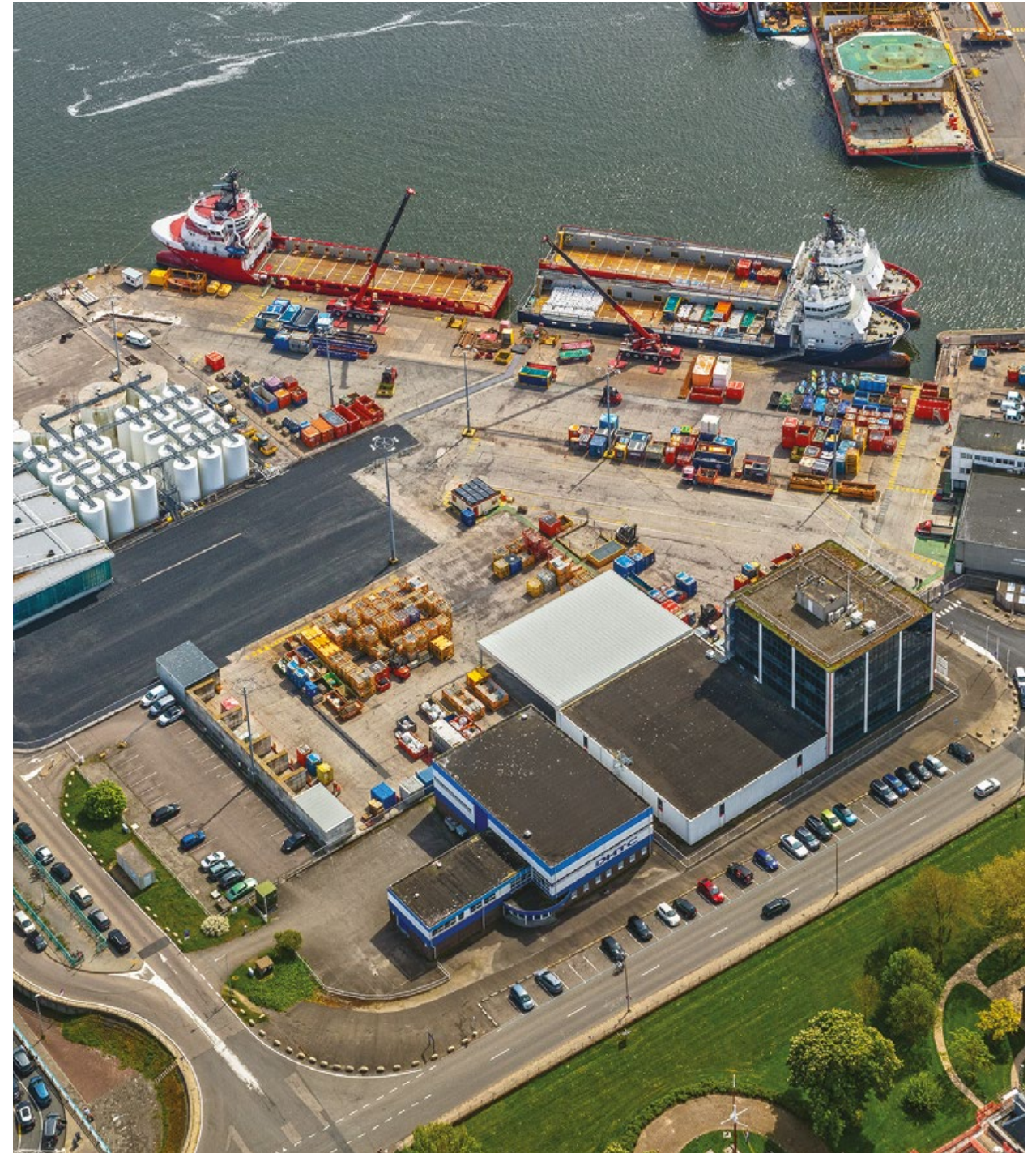
prove the scalability and flexibility of this collaborative approach across energy regions.

Building the Pool required aligning multiple operators on liability frameworks, inspection standards (CMID, OCIMF, IMCA), offshore work hours, and HSEQ procedures – complexities that Peterson expertly manages to sustain seamless cooperation.

CONCLUSION

The SNS Pool demonstrates how industry collaboration can transform offshore logistics – driving cost efficiency, reducing emissions, and managing operational complexities. Peterson's neutral facilitation creates a scalable, sustainable platform that serves a diverse operator base, from traditional oil and gas to renewable energy projects.

As offshore energy continues to evolve, the SNS Pool stands as a proven model of shared strength and smarter logistics, offering a compelling blueprint for other regions seeking to unlock similar benefits.



Fully integrated logistics services for offshore converter platform

Peterson, through its client GE Vernova, is providing a full suite of logistics services – covering areas including marine, aviation, and road transportation; warehousing and storage; personnel; and customs formalities for the Sofia Offshore Converter Platform at Doggerbank.

CHALLENGE

This is a complex, multi-tiered logistics contract. Peterson, operating from multiple strategically located bases, provides trusted, innovative, efficient services, acting as a one-stop-shop for GE Vernova along with its consortium partner Seatrium and subcontractors, for their range of logistics requirements.

APPROACH

The project is the first offshore wind farm in UK waters to utilise shared cargo runs in the Southern North Sea (SNS) Pool which will enhance operational efficiency, reduce costs, and drive sustainability improvements. This model has already been applied successfully to the Hollandse Kust North, South and West projects offshore of the Netherlands.

Peterson is the operational manager of the SNS Pool which has been active for more than 25 years and has recently welcomed renewables clients. Use of the pool maximises efficiency by combining volumes, distance, and capacity; maximises safety by setting minimum quality standards and standardisation of safety rules and regulations; and minimises exposure to the environment by reducing sailing and flying distances. The SNS Pool of marine, air and supply base operations services around 130 locations in the Southern North Sea offshore of the Netherlands, UK, and Germany and Denmark.

Peterson is chartering helicopters, augmenting its aviation offering which is operating several helicopter flights per week from Den Helder and Norwich which gives the client the flexibility of a continental Europe or UK option for its employees and

contractors. Peterson is also managing crew changes for Van Oord for the wind turbine installation vessels at the site, as well as providing facilities management services at the onshore converter station for the Dogger Bank C and Sofia wind farms, based at Lazenby.

Peterson is managing vital elements including warehousing, stevedoring, transport, local procurement, customs, tank and offshore containers, waste management, emergency response & rescue vessels, as well as the provision of personnel including onshore and offshore material coordinators and offshore riggers, crane drivers, and HSEQ employees.

PROJECTED EFFICIENCIES

By utilising the SNS Pool, the client is projected to make significant savings in terms of cost and CO₂.

Using a shared cargo run from Den Helder results in up to €50,000 in savings per voyage, with sole use achieving around €30,000 reduction in costs.

In terms of CO₂ savings, fuel costs are more than halved by utilising shared cargo runs.

WHY PETERSON?

The RWE Sofia Offshore Wind Farm is located 195km off the UK east coast

and will have the capacity to produce 1400MW. It is part of the Dogger Bank offshore wind project which will be the world's largest wind farm.

The multi-location approach allows for maximum flexibility and access to the site. A new facility has recently opened at the Port of Lowestoft which allows Peterson to service larger platform supply vessels and walk-to-work vessels.

The project utilises Peterson's Lighthouse suite of technology which offers real-time insight and analysis for operational teams to ensure efficiency, accountability, and best-in-class service. The data informs business critical decision making, as well as industry benchmarking.

Peterson can draw upon decades of experience in delivering complex logistics scopes in the energy industry, with a market-leading range of services offered by expert internal teams in order to secure industry-critical renewables projects like this.



Offshore wind installation support

Peterson delivered an integrated logistics solution to support the offshore installation phase of two 700MW transformation platforms for TenneT's Hollandse Kust (zuid) offshore grid.

CHALLENGE

Required an integrated logistics partner covering land and sea operations.

SOLUTION

Peterson provided a comprehensive range of logistics services, addressing all client requirements.

RESULTS

Significant reduction in costs and CO₂ emissions.

OVERVIEW

Petrofac required a trusted logistics partner that could deliver an integrated logistics solution covering both land and sea operations for a major offshore project.

APPROACH

Our team provided a comprehensive range of solutions covering all aspects of logistics which included agency, procurement, warehousing, container and tank rental, customs, chartering of support vessels, helicopter services and waste handling, delivered from the Port of Den Helder.

The client benefitted from the Southern North Sea (SNS) Pool, which Peterson has been operating since 2002, delivering significant cost savings of 36% per year and 27Mkg CO_{2e} savings per year for 10 major operators. As our client, Petrofac benefitted from the shared economy model by pooling and sharing of cargo runs resulting in significant cost savings, planning flexibility and reduction in CO₂ emissions.

DELIVERABLES

We delivered the comprehensive range of services to support Petrofac's various teams in the offshore installation phase of two 700MW transformation platforms for TenneT's Hollandse Kust (zuid) offshore grid.



Onshore wind farm, Shetland Islands

Deployed core expertise across quayside operations, managed lifting services, logistics and construction crange at a wind farm in the Shetland Islands.

CHALLENGE

Construction of one of the UK's largest onshore wind farm in the challenging natural environment of Shetland.

SOLUTION

Peterson's experience and expertise of quayside services provided a local logistics solution for clients.

RESULTS

The safe and efficient movement of large components for more than 100 wind turbines, involving complex and heavy lifts.

OVERVIEW

Peterson was involved in the development of one of the most unique onshore wind farms in the UK, comprising of 103 turbines with an installed capacity of 400MW.

Multiple clients were involved in the scope of this work. Each client has a strong track record in the construction of wind farms, but many are not based in Shetland.

Peterson's Shetland-based operations provided a critical local solution for clients, meaning we could quickly react to support any challenges that arose within the scope of our core capability.

APPROACH

Peterson was involved in a large number of scopes on this project, offering clients a simple one-stop-shop approach for any support requirements. Due to the enormous breadth of scope, a number of Peterson's core services were utilised to meet the needs of clients on this project. This included quayside support, vessel chartering and agency, storage, equipment laydown, quayside and loading crange, construction crange, lift-planning, transportation, waste handling and managed lifting services.

DELIVERABLES

By understanding clients' requirements and being responsive and agile, Peterson was able to provide clients with practical solutions to complex problems, involving complex and heavy lifts. The extended capabilities of the Peterson portfolio sit at the heart of this project, and we successfully received, by sea, the major components for this world-leading wind farm.



Our Southern North Sea locations

Operating from strategically located bases across the UK and the Netherlands, we are ideally situated to serve your logistics needs in the Southern North Sea.

Please contact us if you'd like to find out more:

Mark Hol
Head of Commercial
M: +31 6 13692294
E: mhol@onepeterson.com

Peterson Den Helder B.V.
Paleiskade 41 | Den Helder | 1781 AN | Netherlands
energylogistics.onepeterson.com





PETERSON



TRUST WELL PLACED

energylogistics.onepeterson.com



SCAN ME

