

Peterson Energy Logistics

EAST ANGLIA OPERATIONS

TRUST WELL PLACED



PETERSON

01

PETERSON ENERGY LOGISTICS



Active since
1968



800+
people

UK footprint including a presence in East Anglia for almost 20 years; currently employ 30 personnel in Suffolk. Proud members of the NIA, Suffolk Chamber of Commerce and Sizewell C Consortium.

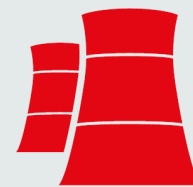


Peterson Energy Logistics is a world-leading, innovative and highly trusted international energy logistics and supply chain solutions company, driven by a passion to lead the way in transforming how the industry plans, manages and executes the movement of critical resources globally.



\$800m

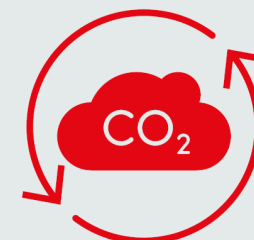
Part of wider group generating \$800m in annual revenue and delivering an extensive range of services in logistics, quality, certification and risk management.



2015

Active in the nuclear sector since 2015 and playing a leading role in supporting the UK's energy transition.

ISO
accredited



A carbon neutral company.

Our services

Global leader in the delivery of integrated logistics and supply chain solutions for the energy industry.

Unburdening clients across the energy sector, planning and managing the movement of critical, high-value equipment and supplies.



Control tower partner



Fourth party logistics provider



Integrated marine services



Warehouse & storage



Ships agency



Plant & equipment



Freight forwarding



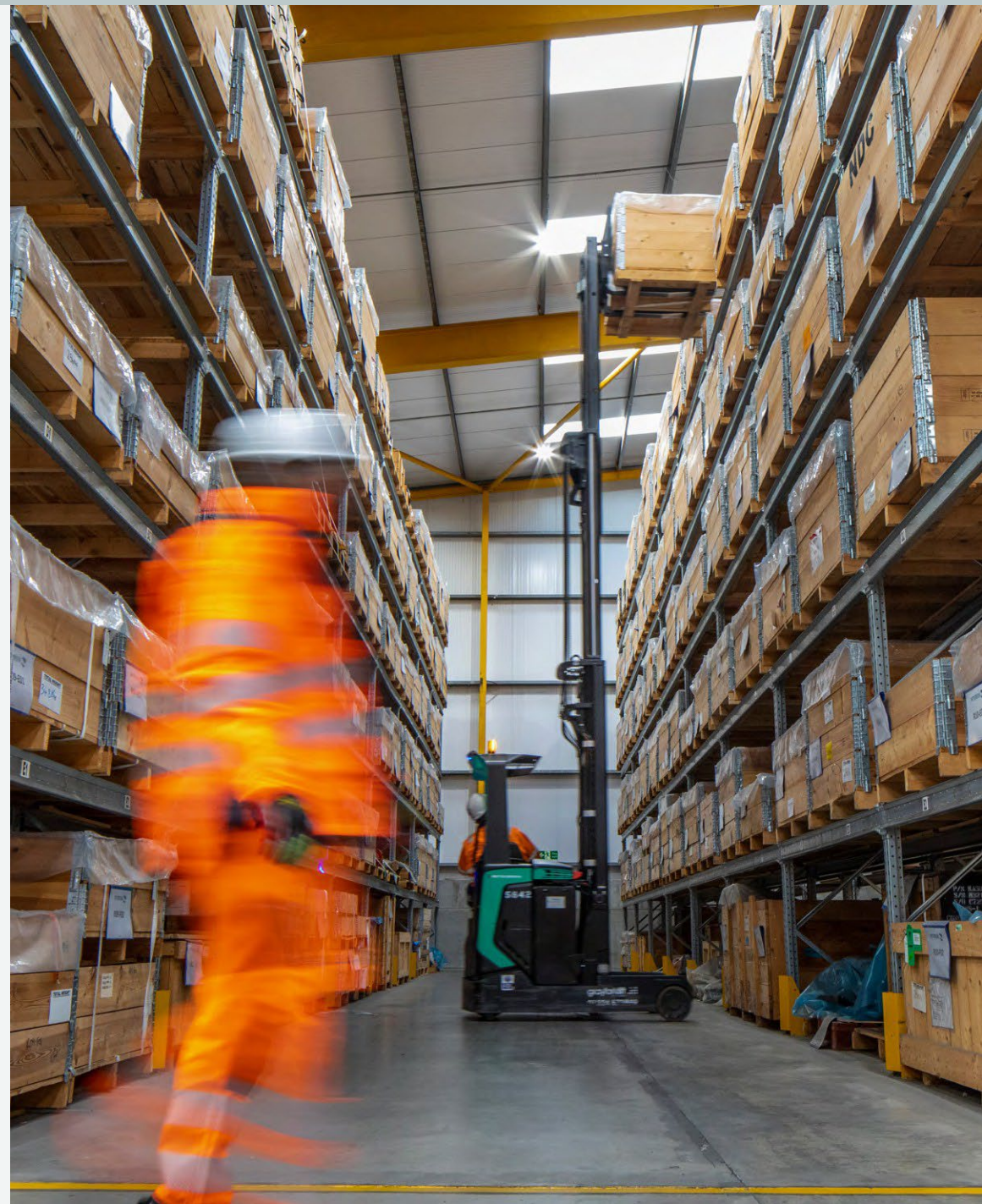
Fuel services



Customs formalities

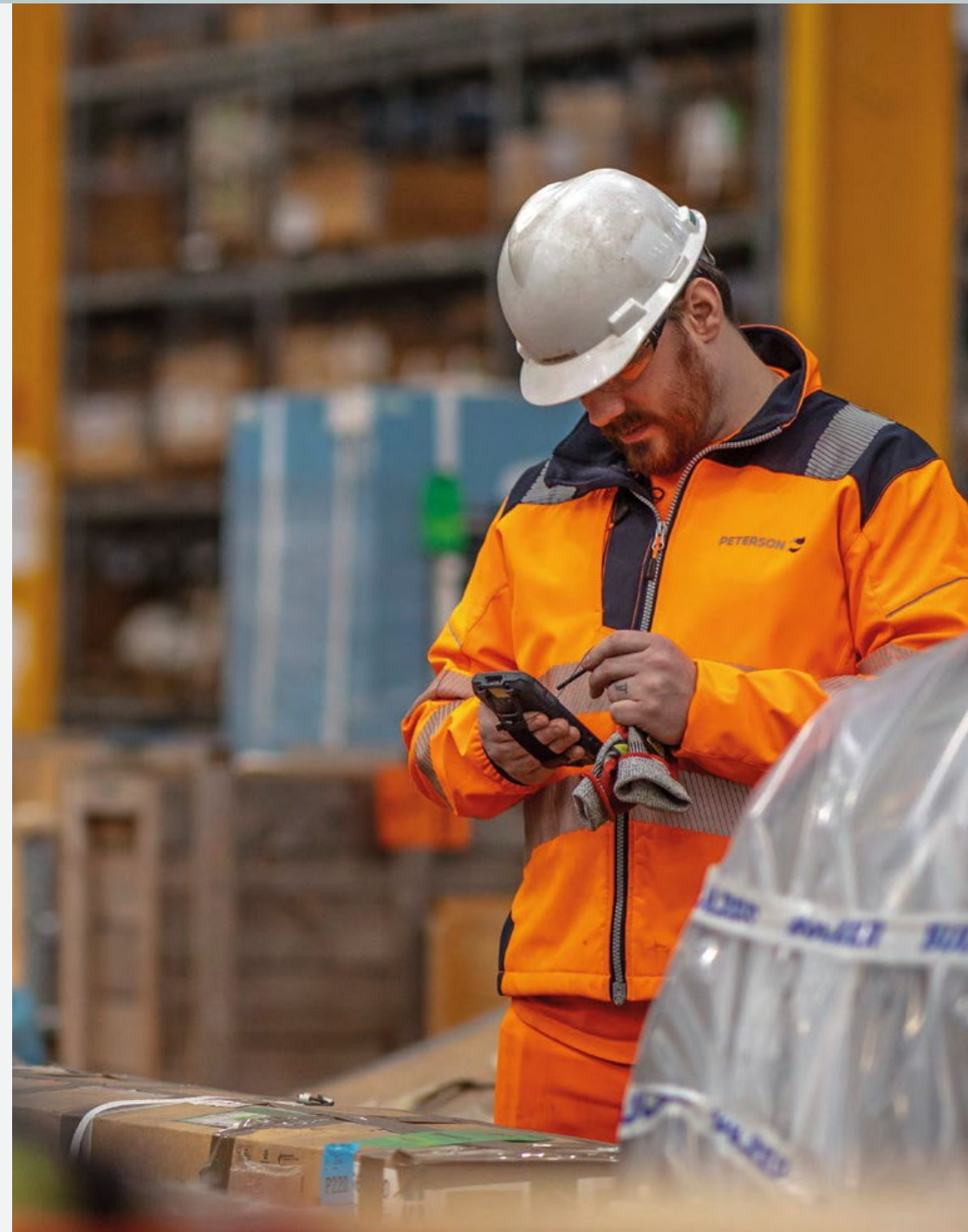


Port operations



Carbon neutral operations

- Peterson Energy Logistics was the first energy logistics company to achieve **PAS 2060** status in 2022 and has become the first to achieve the new **ISO 14068** standard for carbon neutrality in 2025.
- Control Tower methodology and digital applications optimise planning in the supply chain to reduce emissions.
- We provide carbon management consultancy services, and our Lighthouse technology effectively monitors carbon.
- Our initiatives include HVO fuel and ChangeXL fuel improver, electric vehicles, solar panels and LED light sensors.



02

LOCAL CONTENT



The Port of Lowestoft

Active in East Anglia for over 20 years, and at the Port of Lowestoft since 2018. We employ 30 local people and support 100+ local jobs.



Peterson Warehouse

Town Quay

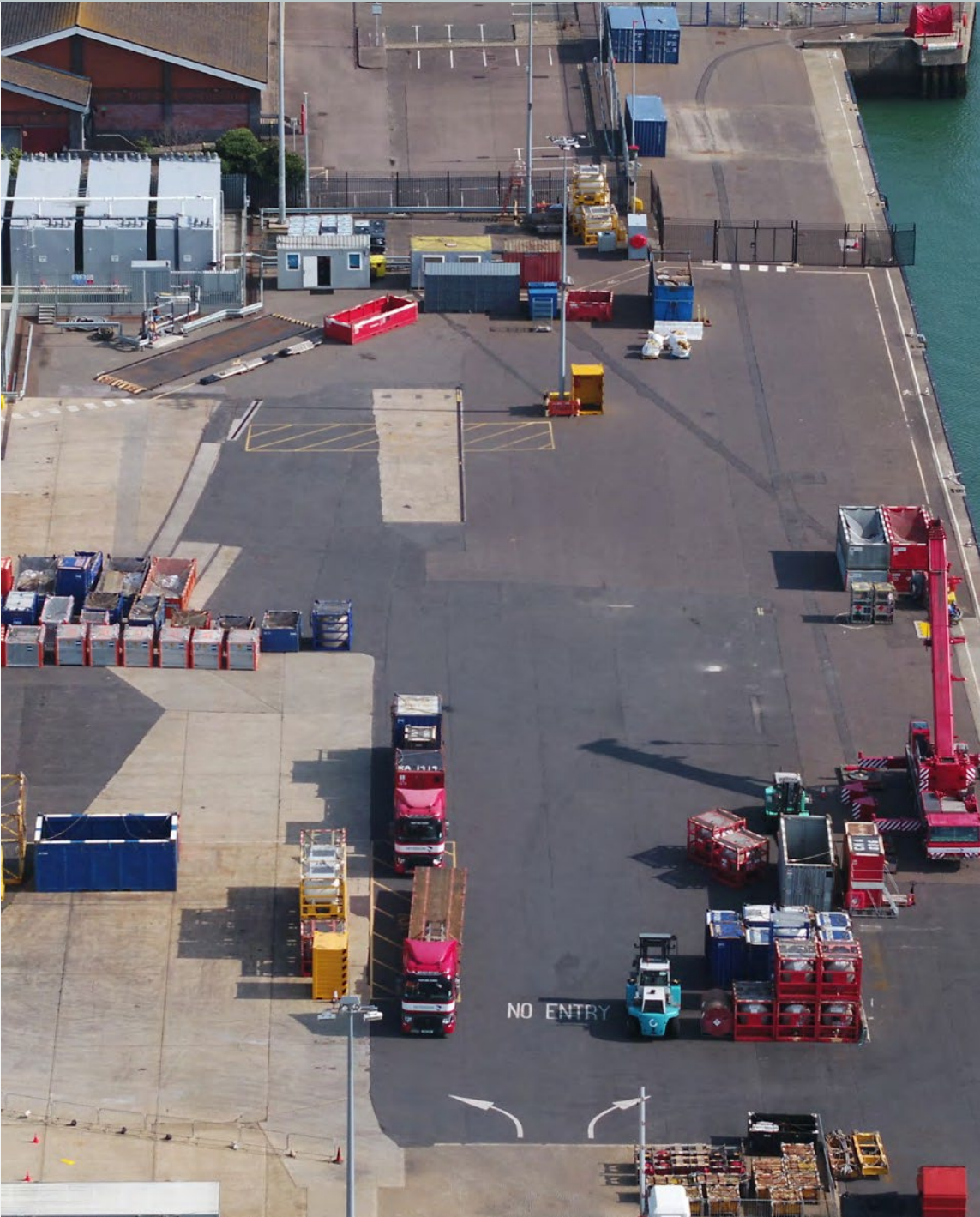
1 Commercial Road

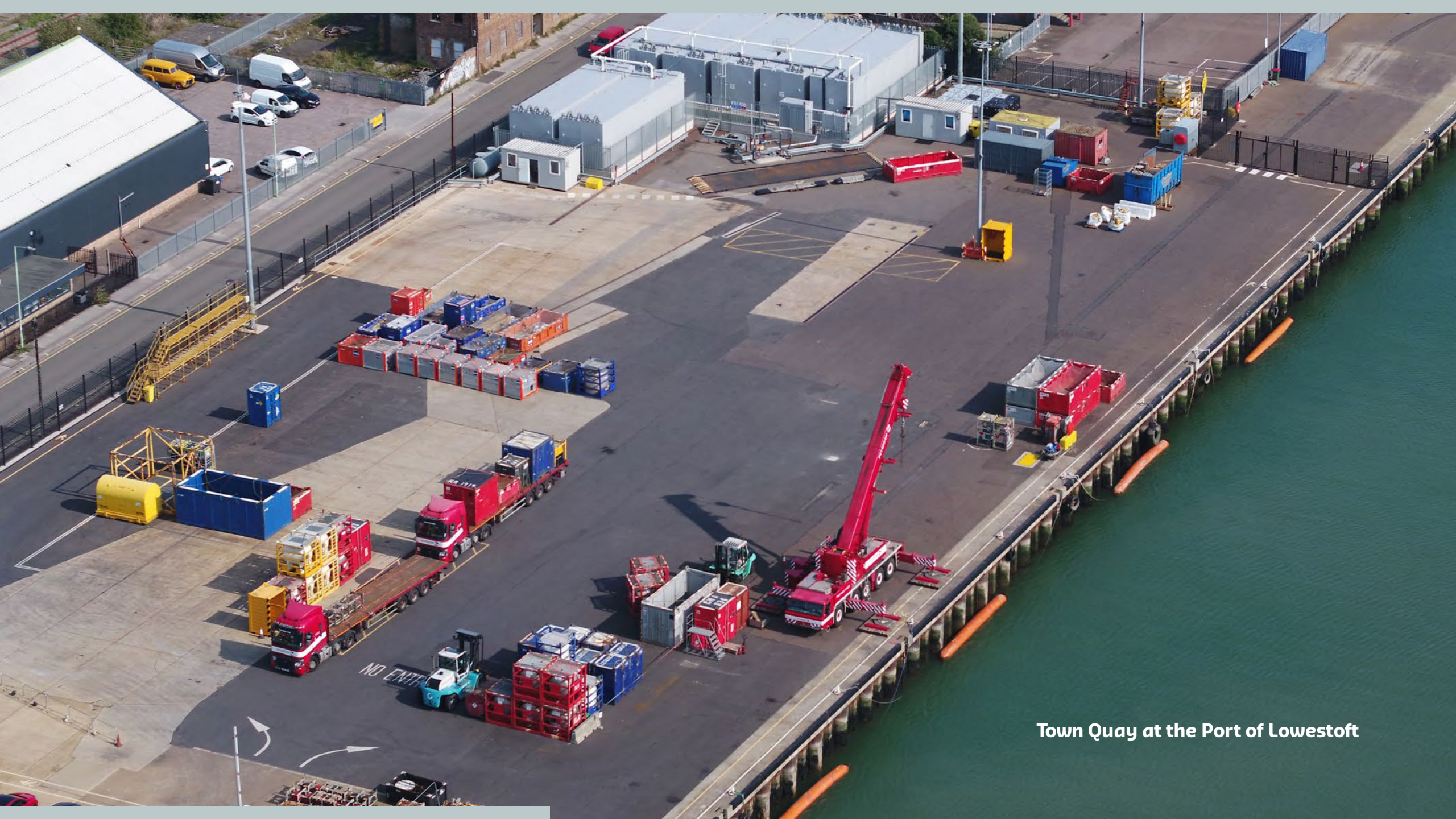
Town Quay

Our facility at Town Quay has a laydown area 5,000m2 and 140m of prime quayside accommodating two berths.

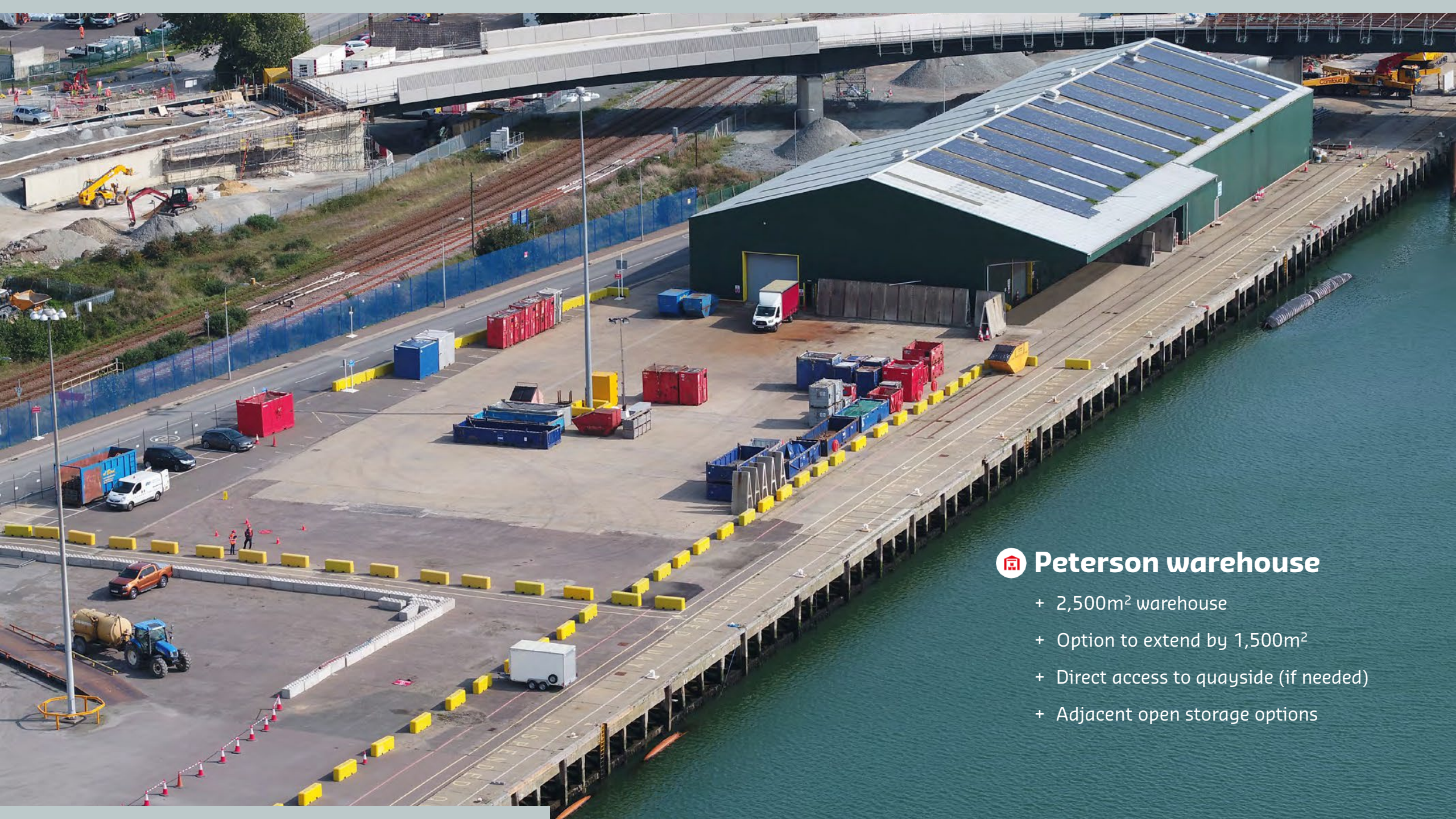
The 6.2m draft can accommodate Multi-Role Vessels, as we have been doing over the past three years. In brief, Town Quay can provide the following:

+ 2.7 acre footprint
+ Close to port vehicular entrance
+ Secure location
+ Inspection gantry
+ Lighting tower to cover 24/7 services
+ Designated storage area for non/hazardous waste
+ Quay depths at 6.2m is the deepest within the port
+ Access to water bunker (rate – up to 50t/h)
+ Fuel facility operated by Peterson (rate 100m3)





Town Quay at the Port of Lowestoft



Peterson warehouse

- + 2,500m² warehouse
- + Option to extend by 1,500m²
- + Direct access to quayside (if needed)
- + Adjacent open storage options

03

LIGHTHOUSE AND CONTROL TOWER



Control Tower approach

Peterson is a leading fourth party logistics provider.

- Integrated, end-to-end logistics service, utilising our Control Tower methodology and technology solutions.
- **Hub for planning and coordinating** the movement of critical resources, it provides **visibility across the supply chain**, and facilitates decision-making based on real-time data gathered from our Lighthouse suite of digital applications.
- **Unburdens customers**, providing the planning and enabling functions to ensure that productivity is maintained, and suitable controls are always in place.
- **Monitored 24/7** by suitably qualified and experienced personnel, the Control Tower also has an important role to play in security and incident management.

“ The Peterson Control Tower has been established in our business for several years with a high degree of success. ”



What is it?

End-to-end logistics supply chain software

What's its purpose?

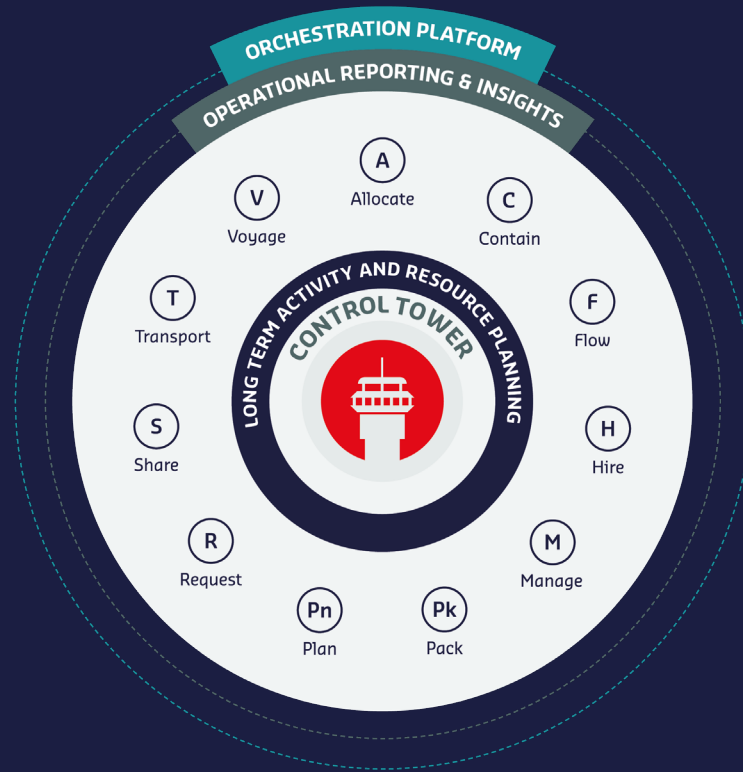
To simplify and increase efficiency within Peterson Energy Logistics and client operations by providing full visibility and control across the entire supply chain, ensuring real time, complete and accurate picture of operations delivering a digital control complementing the physical.

Who is it for?

Operators and service providers within the energy sector through our 3PL, 4PL or SaaS business models.

Digital control tower

Our **Lighthouse** suite provides digital assurance at every step of the cargo demand process, delivering consistent, compliant and safe operations for our clients with digital assurance at every step.



LIGHTHOUSE

Powered by PETERSON



04

TRACK RECORD

Sellafield case study



For nearly 10 years, Peterson successfully operated the Secure Distribution Centre (SDC) and Control Tower at Lillyhall on behalf of Sellafield Limited.

This included:

- + Managing inbound logistics (parcels, palletised goods and other transferrable loads)
- + Carrying out security checks in accordance with Department of Transport guidelines
- + Consolidating and securely distributing goods to Sellafield

GPS fleet management and the use of geofencing allowed Control Tower personnel to monitor vehicle movements and ensure



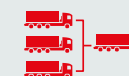
that electronically sealed vehicles were never compromised. Incident management was another key function of the Control Tower, with regular drills being carried out to ensure that business continuity and productivity were maintained in even the most challenging scenarios.

The Lillyhall SDC stood out as an exemplar freight management facility with nuclear professionals at its heart. Working in collaboration with Sellafield, Peterson increased visibility of inbound logistics, improved the control and co-ordination of deliveries using a bespoke Delivery Management System, significantly reduced the number of commercial vehicles on the roads, and delivered costs savings to Sellafield and the wider supply chain.

KEY ACHIEVEMENTS



Recipient of **5 awards** from Sellafield, including **4 safety awards**



Consistently achieving a **consolidation ratio of 9:1**



Fuel savings of **£440,000** across the wider supply chain



836,000kg reduction in CO2 emissions



Successfully introduced **track and trace technology**



ISO accredited and certified **carbon neutral**

Onshore wind farm, Shetland Islands

Deploying core expertise across quayside operations, managed lifting services, logistics and construction cranaage at a wind farm in the Shetland Islands.



CHALLENGE

Constructing one of the UK's largest onshore wind farms in the challenging natural environment of Shetland.



SOLUTION

Utilising Peterson's experience and expertise to provide a local solution for clients.



RESULTS

Providing clients with practical solutions to complex problems, helping the planning phase of the project to run smoothly.



Petrofac offshore installation support

Peterson delivers an integrated logistics solution to support the offshore installation phase of two 700MW transformation platforms for TenneT's Hollandse Kust (zuid) offshore grid.



CHALLENGE

Finding an integrated logistics partner that covers land and sea operations.



SOLUTION

Peterson provide a comprehensive range of logistics services that cover all client requirements



RESULTS

Petrofac benefit from the shared economy model of Peterson's SNS Pool, with a significant reduction in costs and CO2 emissions expected.



Integrated logistics services for offshore converter platform

Peterson, through its client GE Vernova, is providing a full suite of logistics services – covering areas including marine, aviation, and road transportation; warehousing and storage; personnel; and customs formalities for the Sofia Offshore Converter Platform at Doggerbank.



CHALLENGE

This is a complex, multi-tiered logistics contract. Peterson, as a tier one supply chain company operating from multiple strategically located bases, provides trusted, innovative, efficient services, acting as a one-stop-shop for GE Vernova along with its consortium partner Seatrium and subcontractors, for their range of logistics requirements.



TRUST WELL PLACED

energylogistics.onepeterson.com

